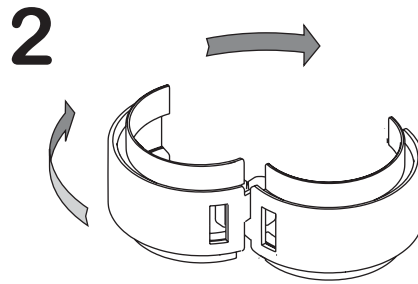
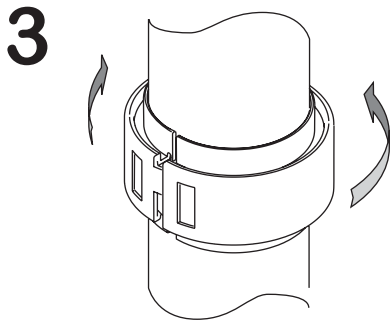


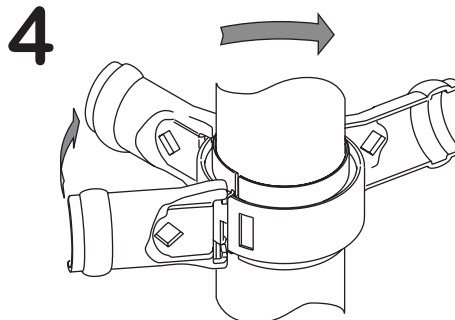
Align the two ring halves one above the other in an open position with the protruding tabs inward, then bring together until each tab sits within the slot on the other.



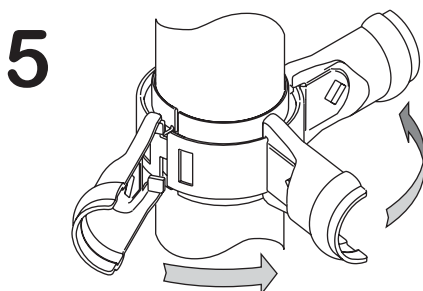
Close the ring halves together until firm, squeeze together if required.



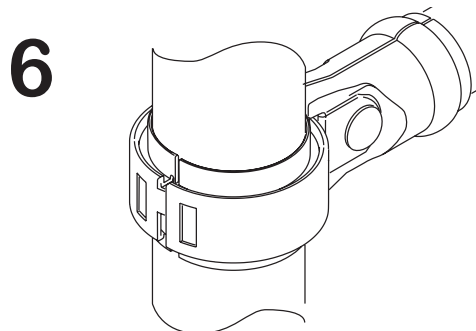
Place the assembled ring on the post and hold in position ready to fit the first MPC clamp which is used to lock the ring together firmly.



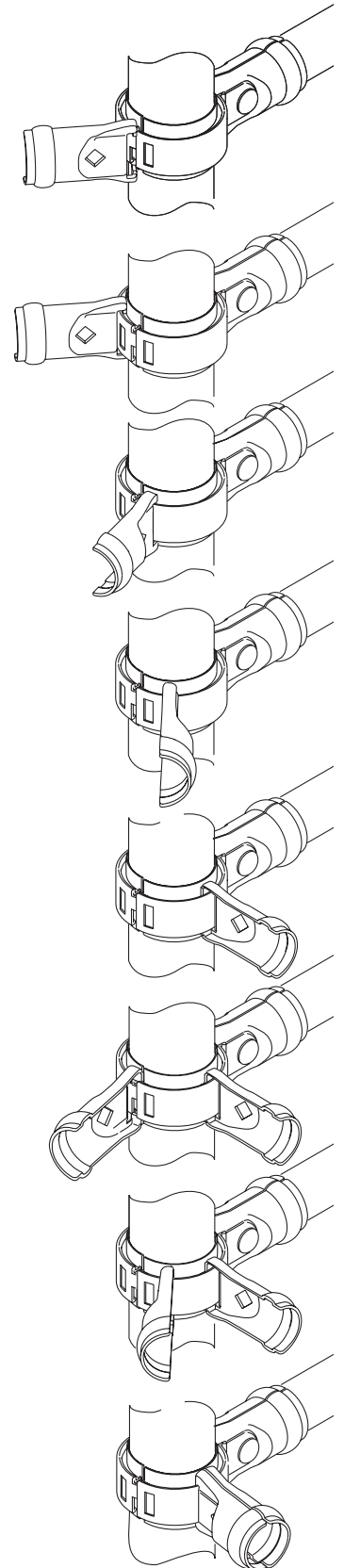
Take the first half of an MPC clamp and slide onto the ring, starting where the protruding tabs were joined in Step 1, open side of the clamp toward the open side of the ring. Slide around the rim until it locks against the pressed lug.



Repeat step 4 above with the second MPC clamp half, this time slide in the opposite direction and again with the open side of the clamp toward the open side of the ring.



Bring the two halves of the MPC clamp together, position on the post and insert bolt. Place the rail in the butt end of the clamp and tighten bolt until firm, ready for final positioning and tightening.



Now you are ready to fit the other fittings to the ring as required.

**HINT:** Slide all clamp fittings onto the ring Open Side first, then move to desired position.